



TOOLING SYSTEMS LIMITED



MODULAR BORING BAR RANGE
ABS® COMPATIBLE

www.microbore.com

MICROBORE TOOLING SYSTEMS LTD

Whitacre Road Industrial Estate, Whitacre Road, Nuneaton, Warwickshire CV11 6BX.
Tel: 0044 (0) 24 7637 3355 Fax: 0044 (0) 24 7637 3322 E-mail: sales@microbore.com

<u>PAGE</u>	<u>CONTENTS</u>
2	Microbore modular boring bars. ABS® compatible. Boring range Ø21.0-Ø90.0
3	Microbore RM series modular boring rings. ABS® compatible. Boring range Ø81.0-Ø163.5
4	Microbore RM series aluminium modular boring rings. ABS® compatible. Boring range Ø136.5-Ø427.0
5	Microbore modular gear adjust boring bars. ABS® compatible. Boring range Ø23.0-Ø134.5
6	Microbore RGA gear adjust modular boring rings. ABS® compatible. Boring range Ø93.0-Ø211.0
7	Microbore RGA aluminium gear adjust modular boring rings. ABS® compatible. Boring range Ø169.0-Ø475.0
8	Microbore modular MGAH07 gear adjust boring head. ABS® compatible. Boring range Ø7.0-Ø27.0

ABS® is a registered trademark of the Komet® Group.

MICROBORE MODULAR BORING BARS



Supplied with thro' coolant hole.
For use on ABS® compatible adaptors

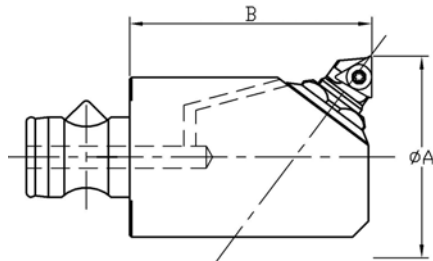


FIGURE 1
TRIANGULAR INDEXABLE

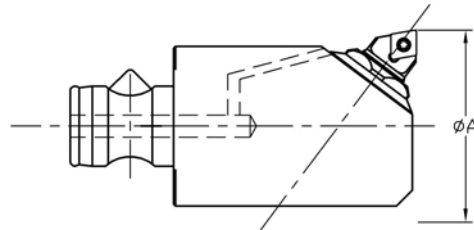


FIGURE 2
RHOMBOIDAL INDEXABLE

Boring Bar Details							
Boring Range		B Min	ABS Coupling	Cartridge Unit	Insert Type		Microbore Part Number
Min	Max				Fig.	Insert	
21.0	29.0	60	25	M2A2T06-40	1	TC__06T1__	MB 21B-90ABS25
				M2A2V-40	2	EP__0402__	
28.0	38.0	60	25	M3A2T09-40	1	TC__0902__	MB 28B-60ABS25
				M3A2C06-40	2	CC__0602__	
				M3A2V-40	2	EP__0602__	
37.0	48.0	60	32	M5B2T11-40	1	TC__1102__	MB 37B-60ABS32
				M5B2C06-40	2	CC__0602__	
				M5B2V-40	2	EP__08M3__	
46.0	66.0	60	40	M5A2T11-40	1	TC__1102__	MB 46B-60ABS40
				M5A2C06-40	2	CC__0602__	
				M5A2V-40	2	EP__08M3__	
65.0	90.0	60	50	M7A2T16-80	1	TC__16T3__	MB 65B-60ABS50
				M7A2C09-80	2	CC__09T3__	
				M7A2V-80	2	EC__1204__	

REFER TO ADAPTOR RANGE CATALOGUE FOR ABS® COMPATIBLE MODULAR ADAPTORS.

REFER TO MICROBORE UNIT RANGE CATALOGUE FOR STYLES OF CARTRIDGES AVAILABLE.

MICROBORE RM SERIES MODULAR BORING RINGS



Supplied with thro' coolant holes
For use on ABS® 63 compatible adaptors

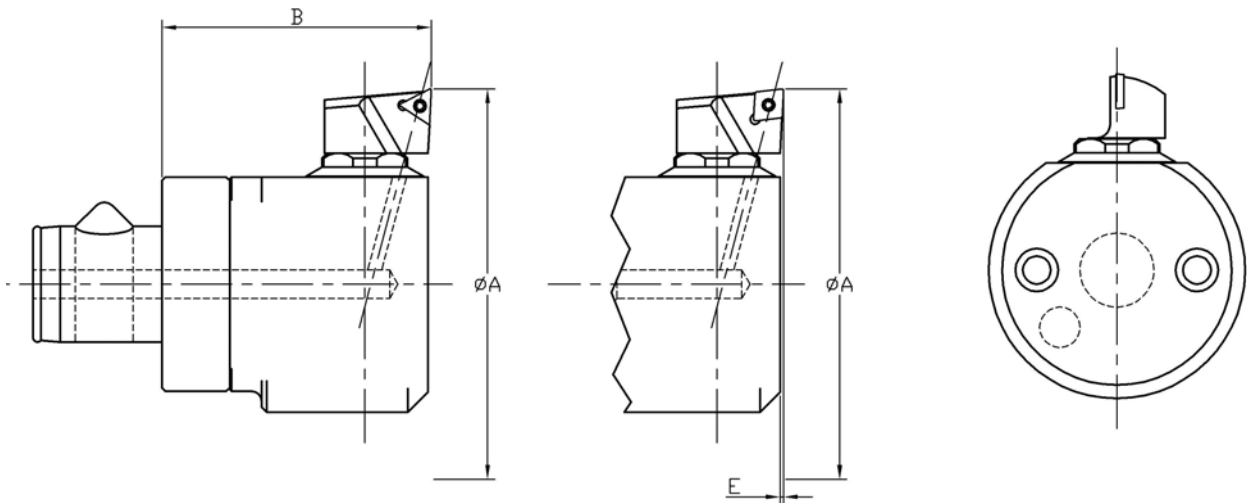


FIGURE 1
TRIANGULAR INDEXABLE

FIGURE 2
RHOMBOIDAL INDEXABLE

Boring Ring Details							
Boring Range		E Min	B Length	Cartridge Unit	Insert Type		Microbore Ring Part No.
A					Fig.	Insert.	
Min	Max						
81.0	128.5	1.0	80.0	M072-0L095TC-100	1	TC_ _1102_ _	RM081-ABS63
				M072-0L095C09-100	2	CC_ _09T3_ _	
116.0	163.5	1.0	80.0	M072-0L095TC-100	1	TC_ _1102_ _	RM116-ABS63
				M072-0L095C09-100	2	CC_ _09T3_ _	

REFER TO ADAPTOR RANGE CATALOGUE FOR ABS® 63 COMPATIBLE MODULAR ADAPTORS.
REFER TO MICROBORE UNIT RANGE CATALOGUE FOR STYLES OF CARTRIDGES AVAILABLE.

MICROBORE RM SERIES MODULAR ALUMINIUM BORING RINGS



Supplied with thro' coolant holes
For use on standard ABS® 80 compatible adaptors

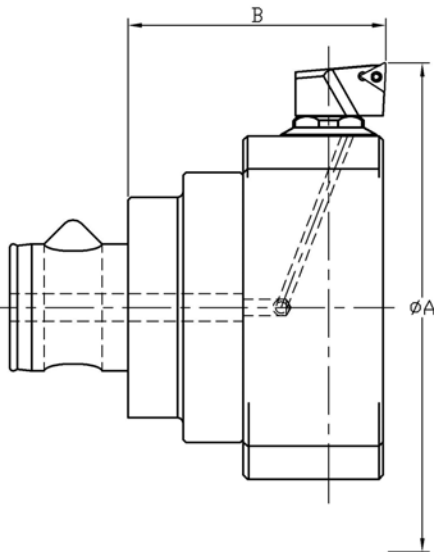


FIGURE 1
TRIANGULAR INDEXABLE

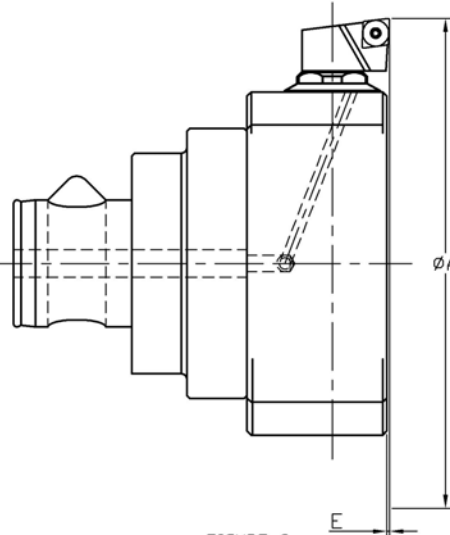
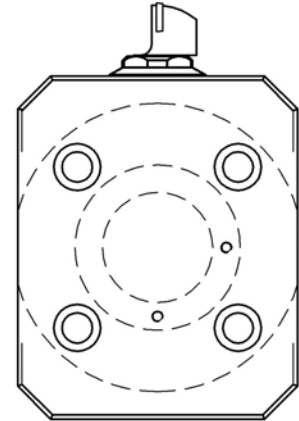


FIGURE 2
RHOMBOIDAL INDEXABLE



Boring Ring Details							
Boring Range		E Min	B Length	Cartridge Unit	Insert Type		Microbore Ring Part No.
A					Fig.	Insert.	
Min	Max						
136.5	181.0	1.0	90.0	M072-0L095TC-100	1	TC_ _1102_ _	RM136AL-ABS80
				M072-0L095C09-100	2	CC_ _09T3_ _	
177.5	222.0	1.0	90.0	M072-0L095TC-100	1	TC_ _1102_ _	RM177AL-ABS80
				M072-0L095C09-100	2	CC_ _09T3_ _	
218.5	263.0	1.0	90.0	M072-0L095TC-100	1	TC_ _1102_ _	RM218AL-ABS80
				M072-0L095C09-100	2	CC_ _09T3_ _	
259.5	304.0	1.0	90.0	M072-0L095TC-100	1	TC_ _1102_ _	RM259AL-ABS80
				M072-0L095C09-100	2	CC_ _09T3_ _	
300.5	345.0	1.0	90.0	M072-0L095TC-100	1	TC_ _1102_ _	RM300AL-ABS80
				M072-0L095C09-100	2	CC_ _09T3_ _	
341.5	386.0	1.0	90.0	M072-0L095TC-100	1	TC_ _1102_ _	RM341AL-ABS80
				M072-0L095C09-100	2	CC_ _09T3_ _	
382.5	427.0	1.0	90.0	M072-0L095TC-100	1	TC_ _1102_ _	RM382AL-ABS80
				M072-0L095C09-100	2	CC_ _09T3_ _	

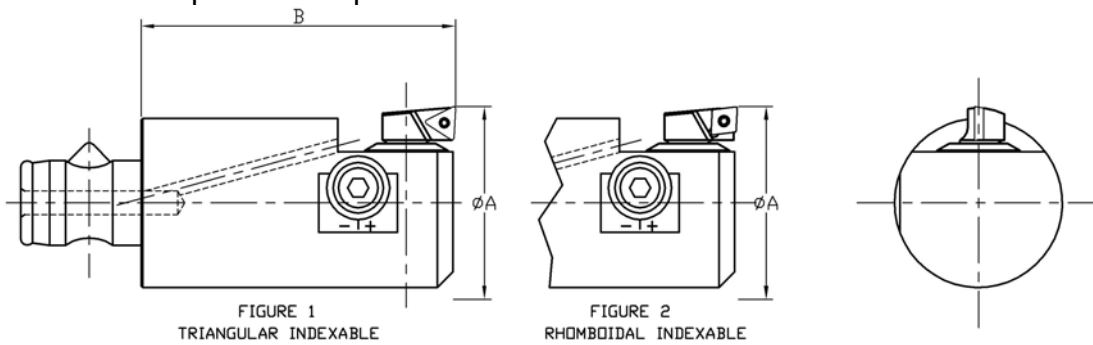
REFER TO ADAPTOR RANGE CATALOGUE FOR ABS® 80 COMPATIBLE MODULAR ADAPTORS.

REFER TO MICROBORE UNIT RANGE CATALOGUE FOR STYLES OF CARTRIDGES AVAILABLE.

MICROBORE MODULAR GEAR ADJUST BORING BARS



Supplied with thro' coolant hole.
For use on ABS® compatible adaptors



Boring Bar Details							
Boring Range		B Min	ABS Coupling	Cartridge Unit	Insert Type		Microbore Part Number
Min	Max				Fig.	Insert	
23.0	27.5	60	25	M022BS095T06-50GA	1	TC__06T1__	GA-23A-60-ABS25
27.0	36.0	60	25	M022-0L095T06-50GA	1	TC__06T1__	GA-27A-60-ABS25
				M022-0L095C06-50GA	2	CC__0602__	
36.0	46.0	60	32	M032-0L095T06-50GA	1	TC__06T1__	GA-36A-60-ABS32
				M032-0L095C06-50GA	2	CC__0602__	
46.0	53.5	60	40	M052BS095TC-50GA	1	TC__1102__	GA-46A-60-ABS40
				M052BS095C06-50GA	2	CC__0602__	
53.0	67.0	160	40	M052-1L095TC-50GA	1	TC__1102__	GA-53A-60-ABS40
				M052-1L095C06-50GA	2	CC__0602__	
67.0	93.0	60	50	M052-0L095TC-50GA	1	TC__1102__	GA-67A-60-ABS50
				M052-0L095C06-50GA	2	CC__0602__	
93.0	134.5	60	63	M072-0L095T06-100GA	1	TC__1102__	GA-93A-60-ABS63
				M072-0L095C09-100GA	2	CC__09T3__	

STANDARD MICROBORE GEAR ADJUST ACCESSORIES				
	Sold only as a set.			
IDENTIFY REQUIRED SPARES FROM THE UNIT SIZE				
UNIT SIZE	WORM	SPACER	SNAP RING	G.A. WRENCH
M022	NR2821 SPARES SET			2842
M032	NR3821 SPARES SET			
M052	NR5821 SPARES SET			5842
M072	NR7821 SPARES SET			

REFER TO ADAPTOR RANGE CATALOGUE FOR ABS® COMPATIBLE MODULAR ADAPTORS.

MICROBORE STRONGLY ADVISE THAT ANY RECONDITIONING WORK ON GEAR ADJUST BORING BARS OR BORING RINGS IS CARRIED OUT BY FACTORY TRAINED TECHNICIANS.

MICROBORE RGA GEAR ADJUST MODULAR BORING RINGS



Supplied with thro' coolant
For use on ABS® 63 compatible adaptors

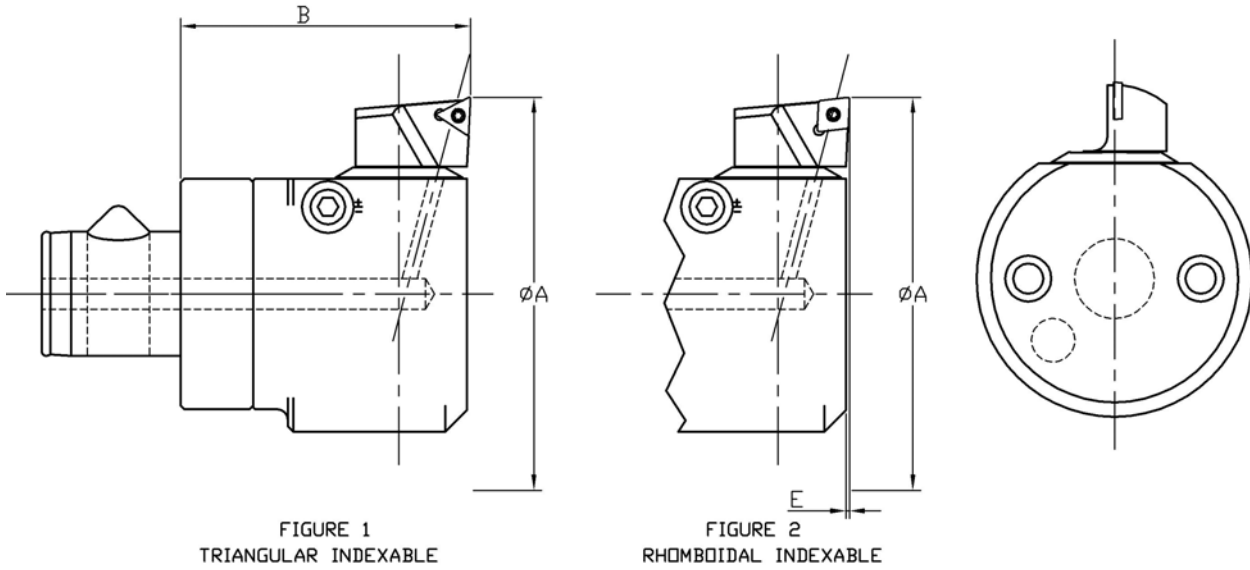


FIGURE 1
TRIANGULAR INDEXABLE

FIGURE 2
RHOMBOIDAL INDEXABLE

Boring Ring Details							
Boring Range		E Min	B Length	Cartridge Unit	Insert Type		Microbore Ring Part No.
Min	Max				Fig.	Insert.	
93.0	135.0	1.0	80.0	M072-0L095TC-100GA	1	TC__1102__	RGA093-80-ABS63
				M072-0L095C09-100GA	2	CC__09T3__	
131.0	173.0	1.0	80.0	M072-0L095TC-100GA	1	TC__1102__	RGA131-80-ABS63
				M072-0L095C09-100GA	2	CC__09T3__	
169.0	211.0	1.0	80.0	M072-0L095TC-100GA	1	TC__1102__	RGA169-80-ABS63
				M072-0L095C09-100GA	2	CC__09T3__	

STANDARD MICROBORE GEAR ADJUST ACCESSORIES			
	Sold only as a set. Please quote Order No.		
IDENTIFY REQUIRED SPARES FROM THE UNIT SIZE			
UNIT SIZE	WORM	SPACER	SNAP RING
M072	NR7821 SPARES SET		G.A. WRENCH
			5842

REFER TO ADAPTOR RANGE CATALOGUE FOR ABS® 63 COMPATIBLE MODULAR ADAPTORS.

MICROBORE STRONGLY ADVISE THAT ANY RECONDITIONING WORK ON GEAR ADJUST BORING BARS OR BORING RINGS IS CARRIED OUT BY FACTORY TRAINED TECHNICIANS.

MICROBORE RGA GEAR ADJUST MODULAR BORING RINGS



Supplied with thro' coolant hole.
For use on ABS® 80 compatible adaptors

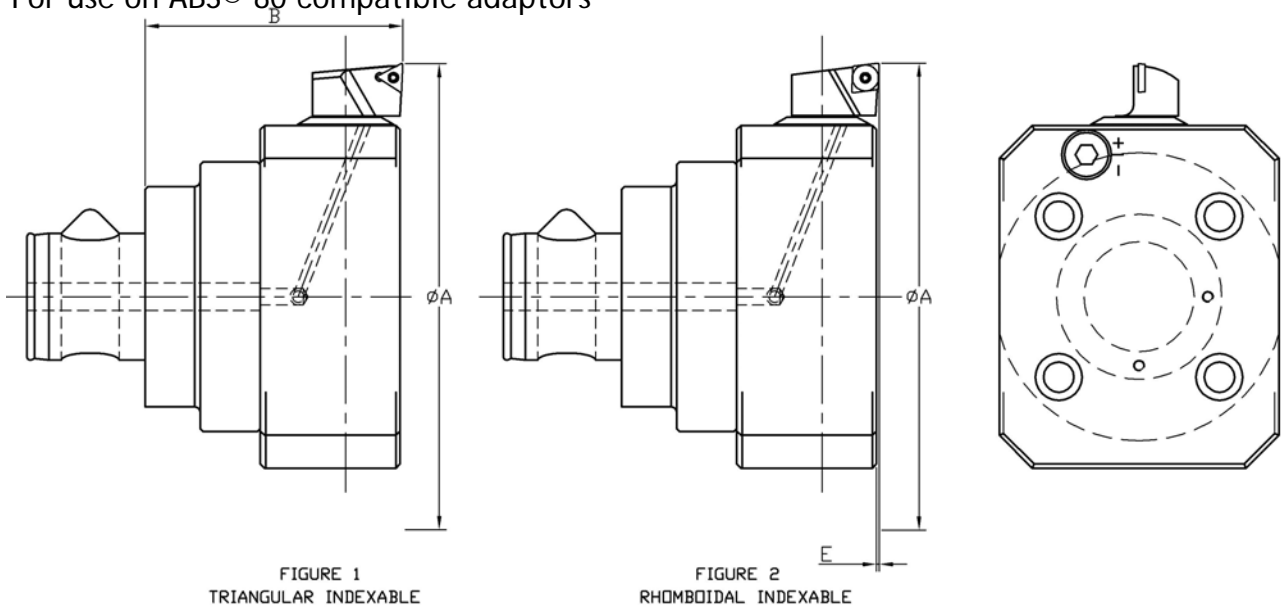


FIGURE 1
TRIANGULAR INDEXABLE

FIGURE 2
RHOMBOIDAL INDEXABLE

Boring Ring Details							
Boring Range		E Min	B Length	Cartridge Unit	Insert Type		Microbore Ring Part No.
Min	Max				Fig.	Insert.	
169.0	211.0	1.0	90.0	M072-0L095TC-100GA	1	TC__1102__	RGA169-90-ABS80
				M072-0L095C09-100GA	2	CC__09T3__	
210.0	252.0	1.0	90.0	M072-0L095TC-100GA	1	TC__1102__	RGA210-90-ABS80
				M072-0L095C09-100GA	2	CC__09T3__	
251.0	293.0	1.0	90.0	M072-0L095TC-100GA	1	TC__1102__	RGA251-90-ABS80
				M072-0L095C09-100GA	2	CC__09T3__	
292.0	334.0	1.0	90.0	M072-0L095TC-100GA	1	TC__1102__	RGA292-90-ABS80
				M072-0L095C09-100GA	2	CC__09T3__	
333.0	375.0	1.0	90.0	M072-0L095TC-100GA	1	TC__1102__	RGA333-90-ABS80
				M072-0L095C09-100GA	2	CC__09T3__	
374.0	416.0	1.0	90.0	M072-0L095TC-100GA	1	TC__1102__	RGA374-90-ABS80
				M072-0L095C09-100GA	2	CC__09T3__	
415.0	475.0	1.0	90.0	M072-0L095TC-100GA	1	TC__1102__	RGA415-90-ABS80
				M072-0L095C09-100GA	2	CC__09T3__	

STANDARD MICROBORE GEAR ADJUST ACCESSORIES				
IDENTIFY REQUIRED SPARES FROM THE UNIT SIZE	Sold only as a set. Please quote Order No.			G.A. WRENCH
	WORM	SPACER	SNAP RING	
UNIT SIZE	NR7821 SPARES SET		5842	

REFER TO ADAPTOR RANGE CATALOGUE FOR ABS® 80 COMPATIBLE MODULAR ADAPTORS.

MICROBORE MODULAR MGAH07 GEAR ADJUST BORING HEADS



Supplied with thro' coolant holes.
For use on ABS® 63 compatible adaptors

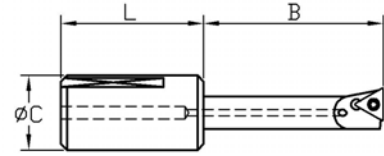
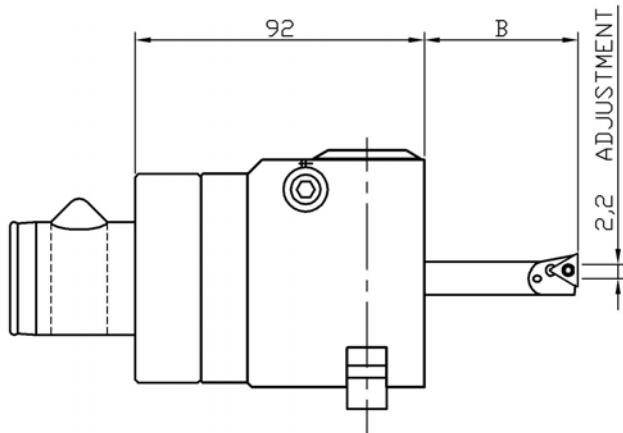


FIGURE 1
TRIANGULAR INSERT

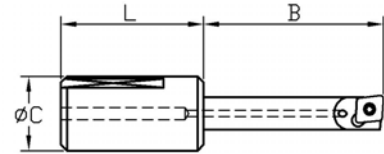


FIGURE 2
RHOMBOIDAL INSERT

MGAH07 Details							
Microbore Part No.	Boring Range		B Boring Length	Ø C	Boring Tool	Insert Type	
	A					Fig.	Insert
	Min	Max					
MGAH07-ABS63	7.0	11.0	29.0	12.0	BTT12-07-29	1	TB__0601__
					BTS12-07-29	2	EP__0402__
	11.0	15.0	35.0	12.0	BTC12-11-35	2	CC__09T3__
					BTS12-11-35	2	EP__0602__
	15.0	19.0	64.0	12.0	BTC12-15-64	2	CC__09T3__
					BTS12-15-64	2	EP__0803__
	19.0	23.0	70.0	12.0	BTC12-19-70	2	CC__09T3__
					BTS12-19-70	2	EP__0803__
	23.0	27.0	70.0	12.0	BTC12-23-70	2	CC__09T3__
					BTS12-23-70	2	EP__0803__

NOTE: HEADS, ADAPTORS AND BORING TOOLS MUST BE ORDERED SEPARATELY.

REFER TO ADAPTOR RANGE CATALOGUE FOR ABS® 63 COMPATIBLE MODULAR ADAPTORS.

MICROBORE STRONGLY ADVISE THAT ANY RECONDITIONING WORK ON GEAR ADJUST BORING BARS OR BORING RINGS IS CARRIED OUT BY FACTORY TRAINED TECHNICIANS.