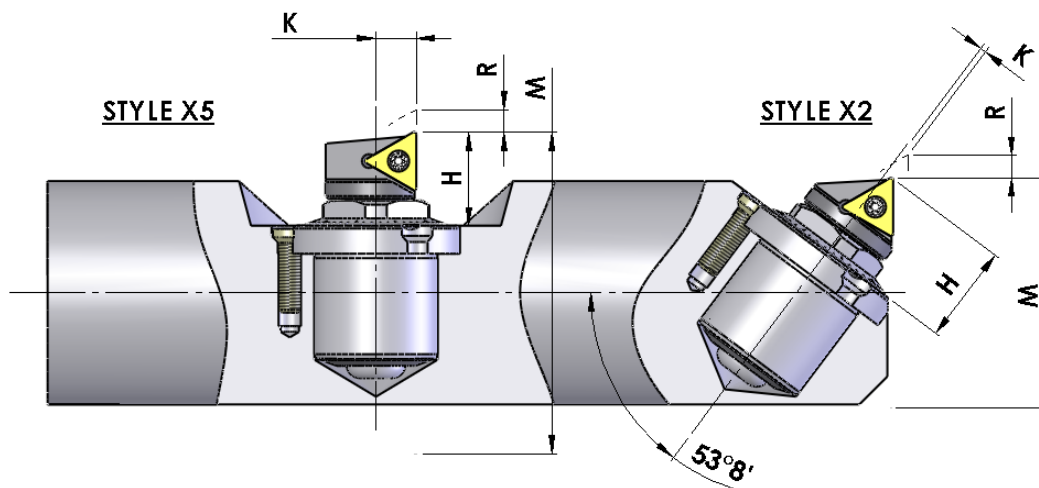


EM Series Fine Boring Units

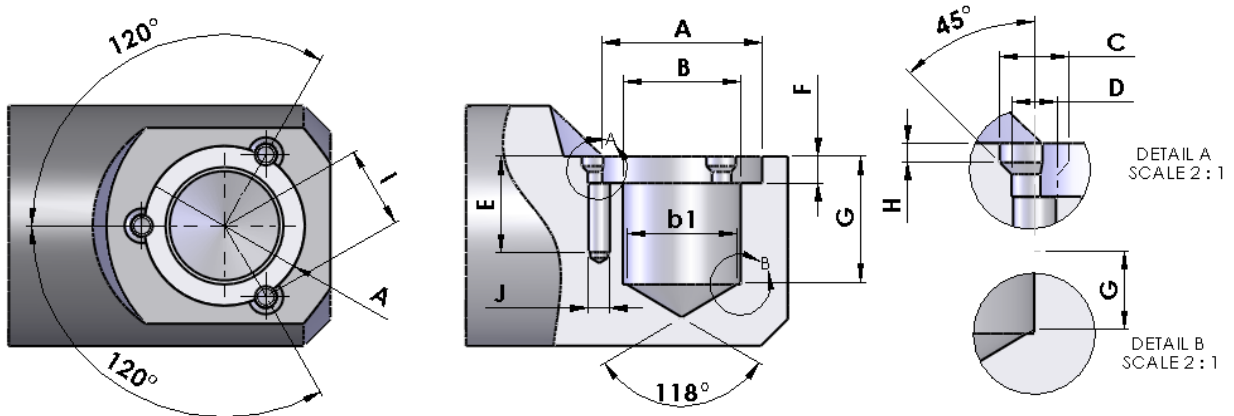
- ✓ EM Series fine boring units are specifically designed for building into boring bars which are dedicated to cutting to or about a specific bore size.
- ✓ Units are pre-tensioned to eliminate backlash. Adjustment is made using the dial only.
- ✓ Each graduation on the dial represents 0.010mm (0.0004") adjustment on diameter.
- ✓ Each vernier graduation on the bush represents 0.002mm (0.0008") adjustment on diameter.
- ✓ Compatible with type MBU adjustable fine boring units.



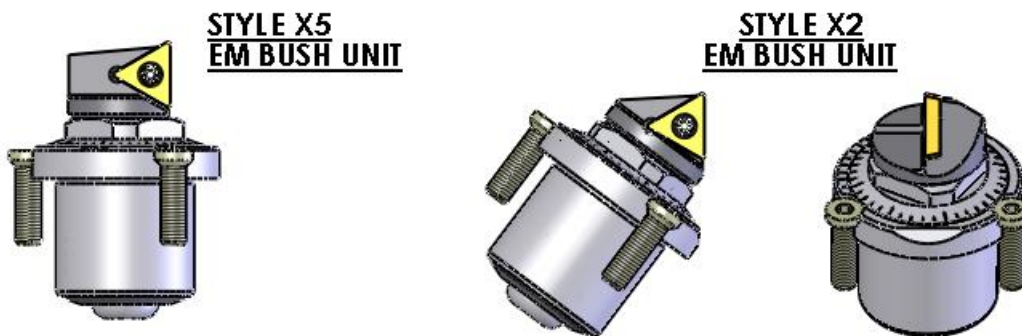
Size	Style	Order Code	M - dia min mm	R - adj range mm	H - min ht mm	K - offset mm	Insert	Radius mm
2	X2	EM2X2C06-40	24.9	0.5	12.9	0.4	CC__0602__	0.4
	X5	EM2X5C06-50	27.9	0.7	11.0	5.1		
3	X2	EM3X2C06-40	31.0	0.8	14.9	1.0	CC__0602__	0.4
	X5	EM3X5C06-50	37.0	1.0	14.0	6.3		
5	X2	EM5X2T11-40	40.5	1.2	17.6	1.1	TC__1102__	0.4
	X5	EM5X5T11-50	48.5	1.5	16.8	7.2		
7	X2	EM7X2T16-80	59.5	2.0	26.5	1.4	TC__16T3__	0.8
	X5	EM7X5T16-100	69.0	2.5	25.4	10.5		

UNITS FOR ALTERNATIVE INSERT STYLES AVAILABLE ON REQUEST.
FOR ORDERING LEFT HAND UNITS PREFIX THE ORDER CODE WITH 'LH'.

Mounting Dimensions



Size	A +0.2	B H7	b1	C +0.3	D	E	F ±0.02	G +0.2	H	I ±0.02	J
2	19.0	16.0	14.5	4.6	3.2	9.00	2.80	11.50	1.60	9.65	M3
3	25.0	20.0	18.5	4.6	3.2	9.00	4.00	15.50	1.60	12.50	M3
5	30.0	22.0	20.5	6.5	4.3	13.00	5.00	24.00	1.80	15.40	M4
7	46.0	32.0	30.5	11.6	5.4	16.00	6.30	33.00		23.00	M5



Size	Style	Order Code
2	X2	EM2X2C06-40
	X5	EM2X5C06-50
3	X2	EM3X2C06-40
	X5	EM3X5C06-50
5	X2	EM5X2T11-40
	X5	EM5X5T11-50
7	X2	EM7X2T16-80
	X5	EM7X5T16-100

Complete Unit, 3 x Lock Screws & Insert Key.
Adjustment Spanner sold separately.