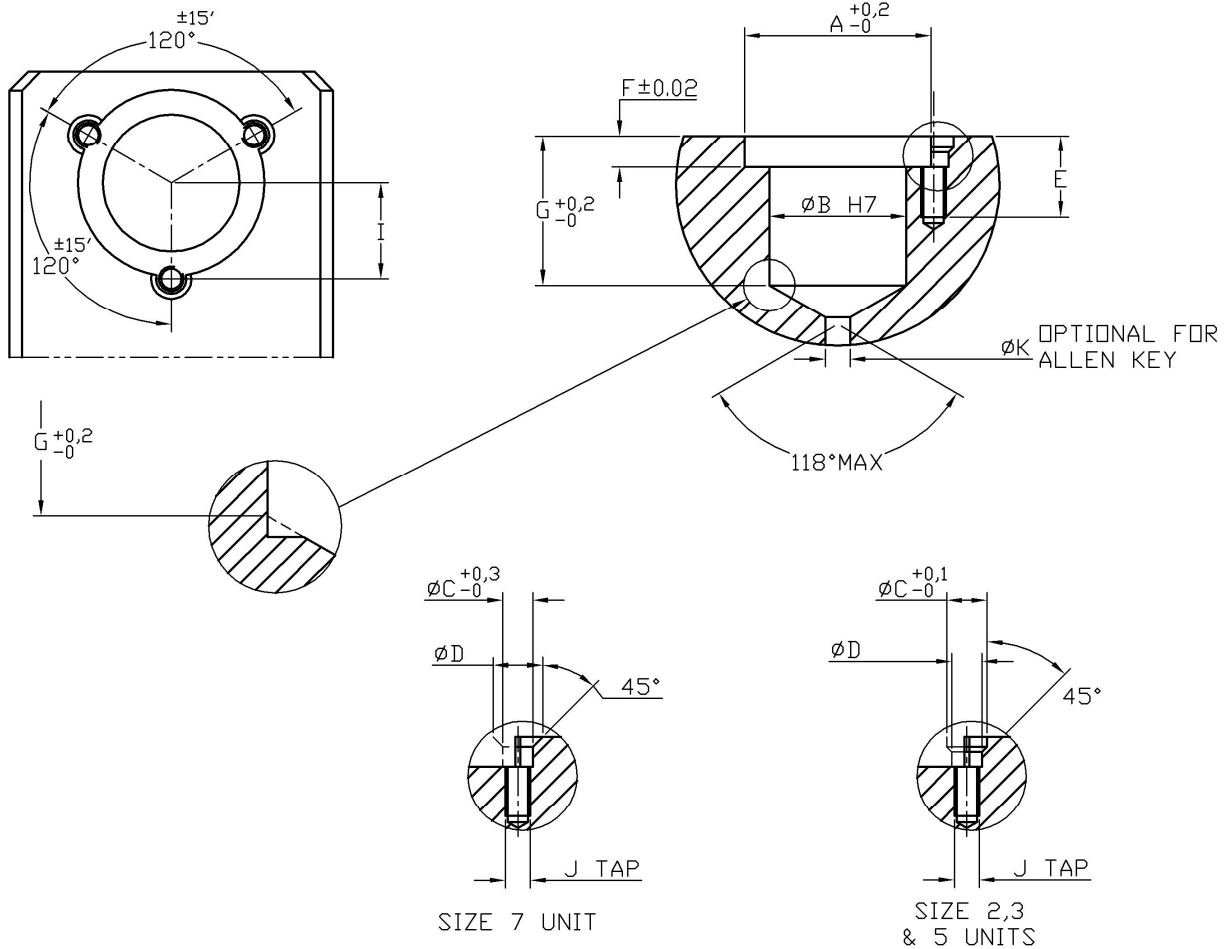


INSTALLATION INFORMATION FOR 'CM' STYLE ADAPTOR BUSHES



Part Number		Microbore Hole Size	A	B	C	D	E	F	G	H	I	J	K
Angular Mounted	Square Mounted												
CM2611	CM2612	2	19.0	16.0	4.6	3.2	9.0	2.8	11.5	16.0	9.65 ± 0.02	M3	2.5
CM3611	CM3612	3	25.0	20.0	4.6	3.2	9.0	4.0	15.5	1.6	12.5 ± 0.05	M3	3.8
CM5611	CM5612	5	30.0	22.0	6.5	4.3	13.0	5.0	24.0	1.8	15.4 ± 0.05	M4	5.0
CM7611	CM7612	7	46.0	32.0	11.6	5.4	16.0	6.3	33.0	-	23.0 ± 0.05	M5	7.5