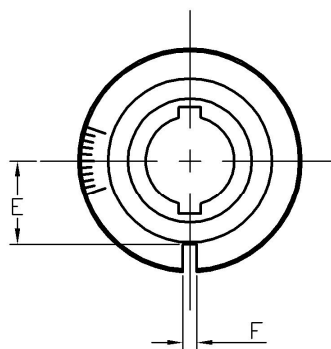
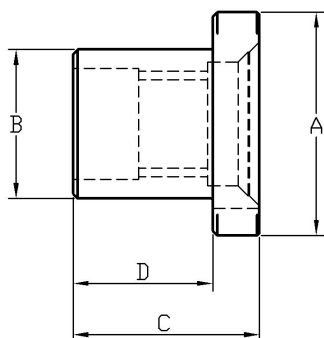


MICROBORE PRESS IN ADAPTOR BUSHES

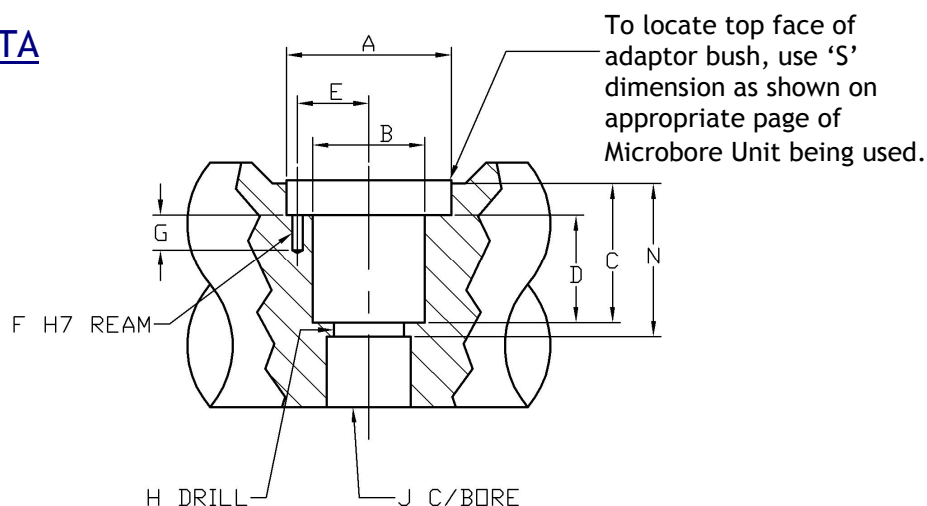
For permanent installation only



Specify whether adaptor bush is to be angular or square mounted.

Part Number		Microbore Hole Size	A	B	C	D	E	F	Metric Lock Screw
Angular Mounted	Square Mounted								
M2601	M2602	2	19.9	12.0	14.5	10.0	6.8	2.5	MS103
M3601	M3602	3	24.9	15.0	18.0	12.5	8.9	2.5	MS106
M5601	M5602	5	35.9	25.0	29.0	20.5	13.2	3.0	MS109
M7601	M7602	7	47.9	32.0	39.0	28.5	18.0	3.0	MS113
M10601	M10602	10	55.9	38.0	51.0	40.0	23.0	3.0	MS116

INSTALLATION DATA



**Machine Diameter 'B' for 0.005 to 0.25 interference fit with actual bush diameter 'B'

Part Number		Microbore Hole Size	A	**B	C	D	E	F	G	H	J	N
Angular Mounted	Square Mounted											
M2601	M2602	2	20.0 20.1	12.0	16.0	12.0	8.6 8.5	2.5	7.0	6.5	8.0	18.5
M3601	M3602	3	25.0 25.1	15.0	19.0	14.0	10.6 10.5	2.5	7.0	8.0	11.5	25.0
M5601	M5602	5	36.0 36.1	25.0	30.0	22.0	15.6 15.5	3.0	10.0	13.0	16.0	35.0
M7601	M7602	7	48.0 48.1	32.0	41.0	31.0	20.6 20.5	3.0	10.0	20.0	24.0	45.0
M10601	M10602	10	56.0 56.1	38.0	53.0	43.0	24.8 24.6	3.0	10.0	25.0	32.0	60.0